

# Installation Instructions

## UltraBright LED Lantern

### MB470 / MB480

**Thank you** for purchasing the Mr Beams® UltraBright LED Lantern. We are committed to eliminating darkness using the latest in Light-Emitting Diodes (LEDs). LEDs are the most efficient and durable light sources available. We are certain that your light will contribute to a safer environment and provide light where you need it at a very reasonable cost.

#### What is included:

- UltraBright LED Lantern

#### What you need to install:

- 4 D-Cell Alkaline Batteries

#### Lantern Features:

**USB Output:** Easily charge your electronics on the go by plugging your USB cord into the USB port.

**30+ Hours of Continuous Light:** Mr. Beams first LED light with an ON/OFF feature.

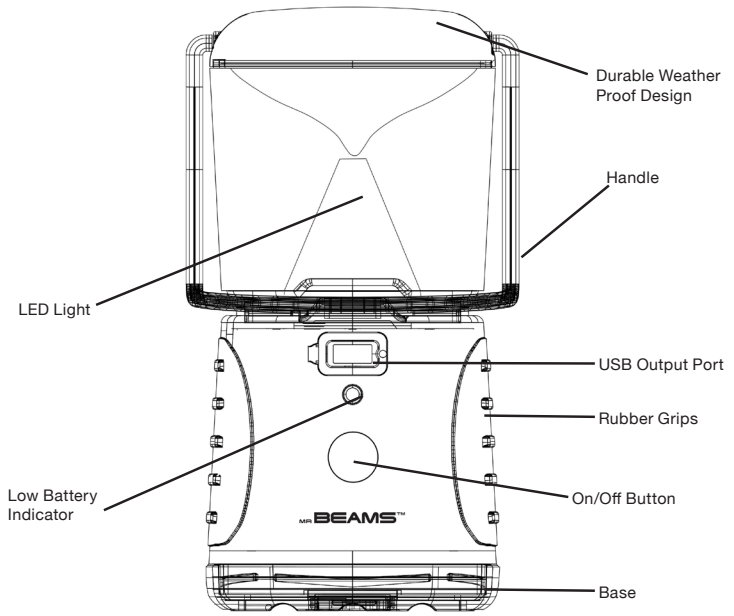
**Auto Shut-off:** Mr. Beams Lantern turns off automatically after 60 minutes, conserving battery life (Lantern will blink after 58 minutes to alert user). To keep on, press the on/off button.

**Bright LED:** 260 Lumens covers up to 900 sq ft.

**Night Light Mode:** Allows user to customize brightness as needed. Two brightness settings: Full Brightness and Night Light Mode.

**Durable, Weatherproof:** Mr. Beams Lantern is equipped with a weather proof seal.

**Tips:** Use only new alkaline D-Cell batteries with 1.5V rating. Do not mix old and new batteries. If batteries are not new, it may cause the light to malfunction. Install batteries with polarity in correct position. **If your low battery indicator is flashing, it means that it is time to replace the batteries.**



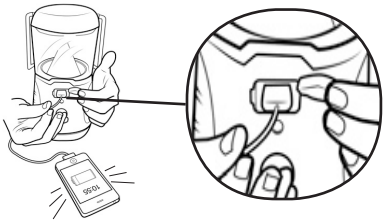
#### Set Up



1. Remove base of the Lantern by rotating clockwise.
2. Release battery door, by squeezing the tab inward and pulling away from the unit.

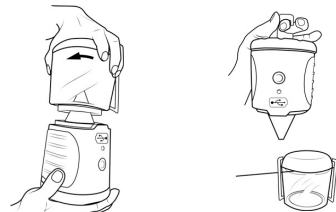
3. Insert 4 D-Cell batteries into Lantern with flat side towards spring. Press lid closed and twist base tightly to close.
4. Press the button once to activate light for full brightness. Press the button a second time for a night light mode. Press the button a third time to shut off.

#### Charging Electronics on the Go with USB Mode



5. To charge a device, open USB Port Cover. Plug your device's USB cord into USB Port.

#### Hanging Mode



7. Remove top of the Lantern by rotating lid clockwise and pulling apart.
8. Turn Lantern upside down and lift hook from the base. Hang the lantern from your desired location.

#### Battery Caution:

- 1) Do not mix old and new batteries
- 2) Do not mix Alkaline, Standard (Carbon-Zinc) or Rechargeable (Nickel Cadmium) or (Nickel Metal Hydride) batteries
- 3) Do not dispose of batteries in fire
- 4) Batteries should be recycled or disposed of as per state and local guidelines